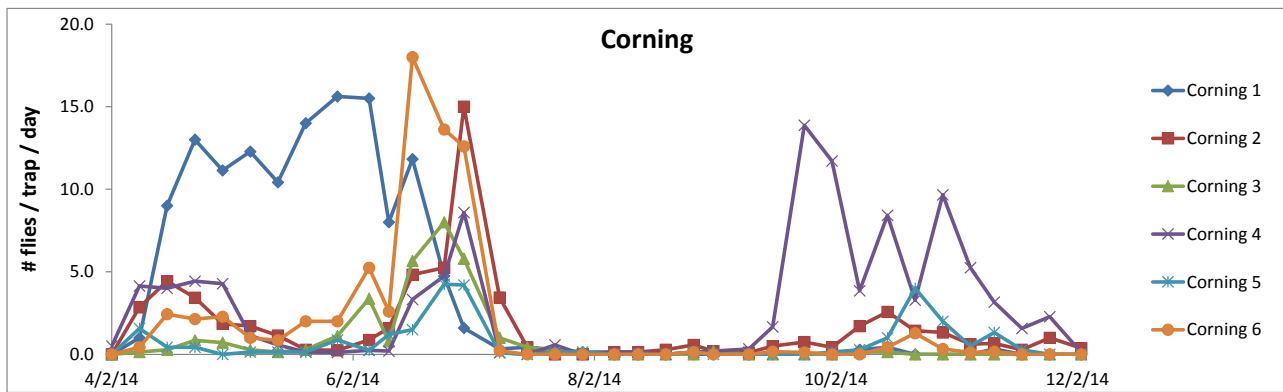
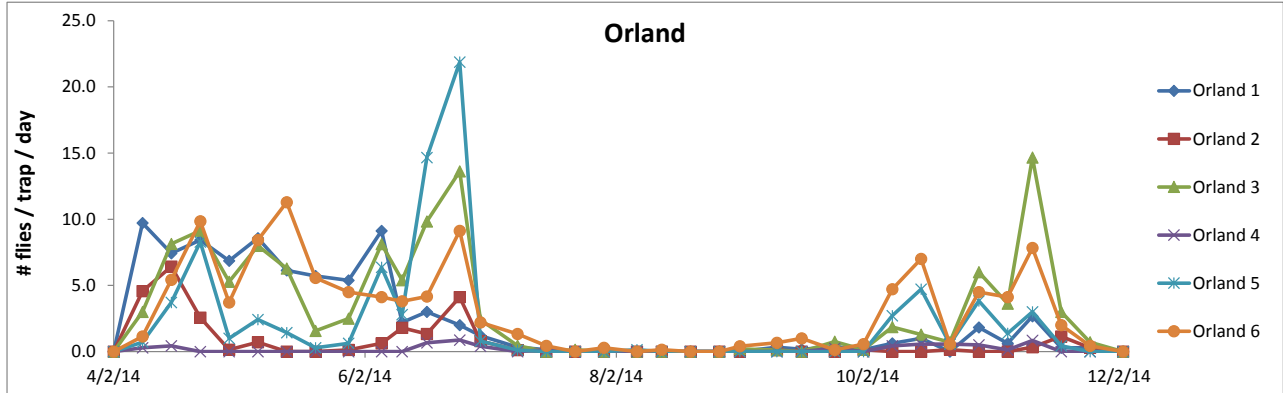


UCCE Glenn County - Olive Fruit Fly Populations for Glenn and Tehama County

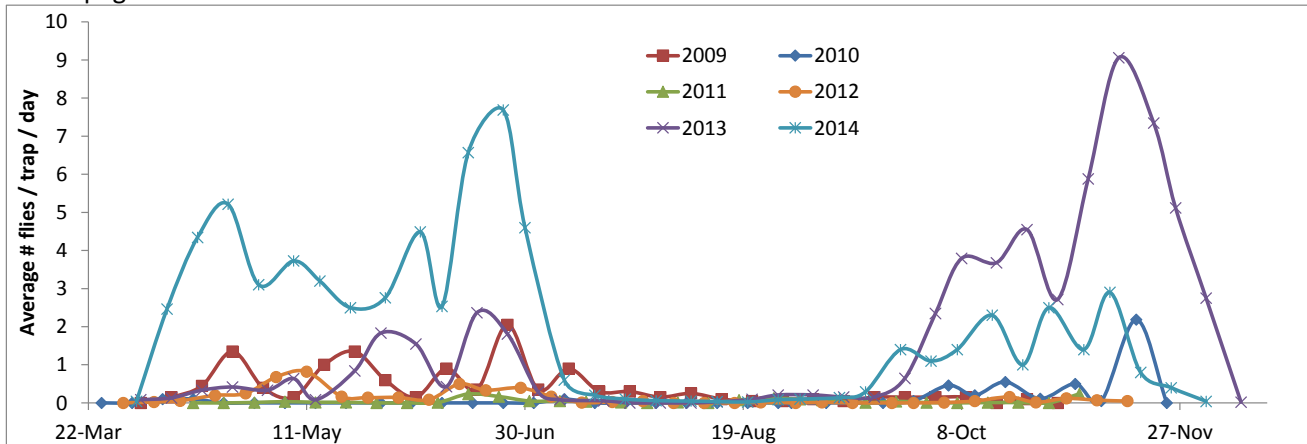
Newly
Updated!

The olive fly pest management guidelines, including trapping and control guidelines, have been updated. View them here: <http://www.ipm.ucdavis.edu/PMG/r583301311.html>



December 3, 2014: And with that, we end the 2014 trapping season. Only a stray male was captured here or there this week, and no females. We don't know enough yet how weather affects the overwintering fly population, but hopefully the lower numbers this fall will translate into less pressure next spring!

Historical trap catches are shown below. Trap catch data at each location are on the following pages.



Block	Trap(s)	18-Nov		25-Nov		3-Dec														TOT/YR			
		M	F	M	F	M	F	M	F	M	F	M	F	M	F	M	F	M	F	M	F		
Orland 1	Trap 1	1	1	2	0	0	0														358	238	
Glenn County Fairgrounds																							
Orland 2	Trap 1	4	4	0	2	0	0														87	90	
Road 200 & Road E																							
Orland 3	Trap 1	15	6	4	1	0	0														464	338	
SE Orland N and 16																							
Orland 4	Trap 1	0	0	0	0	0	0														23	18	
NE Orland Rd 12 and N																							
Orland 5	Trap 1	3	0	0	0	0	0														375	200	
Road 21 and M																							
Orland 6	Trap 1	10	4	3	0	0	0														399	363	
Hwy 99W and Road 18																							
Corning 1	Trap 1	0	0	0	0	0	0														563	356	
Northbound I-5 Reststop																							
Corning 2	Trap 1	2	0	6	1	3	0														243	155	
Fig Lane and Houghton																							
Corning 3	Trap 1	0	0	0	0	0	0														132	72	
Barham and Sampson																							
Corning 4	Trap 1	8	3	11	5	1	0														401	339	
Sac. River - Kopta Road																							
Corning 5	Trap 1	2	0	0	0	0	0														111	56	
Viola Ave. & Orchard Ave.																							
Corning 6	Trap 1	0	0	0	0	0	0														259	191	
Dora Ave. & Marguerite Ave.																							
Total		45	18	26	9	4	0	0	0	0	0	0	0	0	0	0	0	0	0	0	0	3415	2416

Block	Trap(s)	1-Sep		10-Sep		16-Sep		24-Sep		1-Oct		8-Oct		15-Oct		22-Oct		28-Oct		5-Nov		11-Nov		TOT/YR	
		M	F	M	F	M	F	M	F	M	F	M	F	M	F	M	F	M	F	M	F	M	F	M	F
Orland 1	Trap 1	0	0	1	2	0	1	2	1	1	0	4	1	5	1	0	0	9	2	5	0	12	4	355	237
Glenn County Fairgrounds																									
Orland 2	Trap 1	0	0	1	0	0	0	0	0	0	1	0	0	0	0	1	0	0	0	0	0	1	1	83	84
Road 200 & Road E																									
Orland 3	Trap 1	0	1	1	0	0	0	5	1	0	1	9	4	5	4	2	3	22	14	18	11	51	37	445	331
SE Orland N and 16																									
Orland 4	Trap 1	0	0	0	0	0	0	2	0	0	0	2	1	3	1	0	4	2	1	0	1	2	3	23	18
NE Orland Rd 12 and N																									
Orland 5	Trap 1	0	0	0	0	0	0	0	0	0	0	12	7	19	14	1	3	7	16	6	5	12	6	372	200
Road 21 and M																									
Orland 6	Trap 1	0	2	3	3	3	3	1	0	3	1	15	18	33	16	2	2	10	17	15	18	21	26	386	359
Hwy 99W and Road 18																									
Corning 1	Trap 1	0	0	0	0	0	0	0	0	0	0	2	0	2	1	0	0	0	0	0	0	1	1	563	356
Northbound I-5 Reststop																									
Corning 2	Trap 1	1	0	0	1	2	1	4	2	2	1	6	6	8	10	10	0	6	2	4	1	3	1	232	154
Fig Lane and Houghton																									
Corning 3	Trap 1	1	0	0	0	0	0	0	0	0	0	0	1	1	0	0	0	0	0	0	0	0	0	132	72
Barham and Sampson																									
Corning 4	Trap 1	0	1	1	2	4	6	65	46	50	32	13	14	39	20	8	15	28	30	26	16	9	10	381	331
Sac. River - Kopta Road																									
Corning 5	Trap 1	0	0	0	0	0	0	0	0	0	1	2	0	5	2	22	6	9	3	3	1	4	4	109	56
Viola Ave. & Orchard Ave.																									
Corning 6	Trap 1	0	0	0	0	0	1	0	1	0	0	0	0	2	1	8	1	1	1	1	0	1	0	259	191
Dora Ave. & Marguerite Ave.																									
Total		2	4	7	8	9	12	79	51	56	37	65	52	122	70	54	34	94	86	78	53	117	93	3340	2389

Block	Trap(s)	17-Jun		25-Jun		30-Jun		9-Jul		16-Jul		23-Jul		30-Jul		6-Aug		13-Aug		20-Aug		27-Aug		TOT/YR		
		M	F	M	F	M	F	M	F	M	F	M	F	M	F	M	F	M	F	M	F	M	F	M	F	
Orland 1	Trap 1	15	3	10	6	3	3	1	2	1	0	0	0	0	0	0	0	0	0	0	0	0	0	0	316	225
Glenn County Fairgrounds																										
Orland 2	Trap 1	6	2	20	13	2	2	0	1	0	0	0	0	0	0	0	0	0	0	0	0	0	0	0	80	82
Road 200 & Road E																										
Orland 3	Trap 1	43	16	63	46	7	5	3	1	0	0	1	0	0	0	0	0	0	0	0	0	0	0	0	332	255
SE Orland N and 16																										
Orland 4	Trap 1	4	0	3	4	1	1	0	0	1	0	0	0	0	0	0	0	0	0	0	0	0	0	0	12	7
NE Orland Rd 12 and N																										
Orland 5	Trap 1	56	32	118	57	3	1	1	0	0	0	0	0	0	0	1	0	0	0	0	0	0	0	0	315	149
Road 21 and M																										
Orland 6	Trap 1	17	8	43	30	7	4	5	7	2	1	0	0	0	2	0	0	0	1	0	0	0	0	0	280	253
Hwy 99W and Road 18																										
Corning 1	Trap 1	41	30	26	12	6	2	2	1	3	0	2	0	1	0	1	0	0	0	0	0	0	0	0	558	354
Northbound I-5 Reststop																										
Corning 2	Trap 1	20	9	27	15	52	23	14	17	3	0	0	0	0	0	1	0	1	0	2	0	3	1	186	129	
Fig Lane and Houghton																										
Corning 3	Trap 1	23	11	39	25	20	9	7	2	2	1	2	0	0	1	0	0	0	0	0	0	0	0	0	130	71
Barham and Sampson																										
Corning 4	Trap 1	15	5	17	21	20	23	1	0	0	0	2	2	0	0	1	0	1	0	0	0	1	0	0	138	139
Sac. River - Kopta Road																										
Corning 5	Trap 1	5	4	21	13	14	7	0	1	0	0	1	0	1	0	0	0	0	0	0	0	0	1	0	64	39
Viola Ave. & Orchard Ave.																										
Corning 6	Trap 1	66	42	72	37	28	35	0	2	0	0	0	0	0	0	0	0	0	0	0	0	0	1	0	246	186
Dora Ave. & Marguerite Ave.																										
Total		311	162	459	279	163	115	34	34	12	2	8	2	2	3	4	0	2	1	2	0	6	1	2657	1889	

Block	Trap(s)	2-Apr		9-Apr		16-Apr		24-Apr		30-Apr		7-May		14-May		21-May		29-May		6-Jun		11-Jun		TOT/YR		
		M	F	M	F	M	F	M	F	M	F	M	F	M	F	M	F	M	F	M	F	M	F	M	F	
Orland 1	Trap 1	0	0	44	24	32	20	32	27	24	24	33	27	20	23	25	15	22	21	46	27	8	3	286	211	
Glenn County Fairgrounds																										
Orland 2	Trap 1	0	0	18	14	18	27	6	12	0	1	1	4	0	0	0	0	1	0	4	1	4	5	52	64	
Road 200 & Road E																										
Orland 3	Trap 1	0	0	11	10	36	21	37	27	23	14	23	33	20	24	5	6	10	10	34	31	16	11	215	187	
SE Orland N and 16																										
Orland 4	Trap 1	0	0	1	1	2	1	0	0	0	0	0	0	0	0	0	0	0	0	0	0	0	0	0	3	2
NE Orland Rd 12 and N																										
Orland 5	Trap 1	0	0	3	2	14	12	41	17	3	4	13	4	7	3	2	0	4	1	40	11	9	5	136	59	
Road 21 and M																										
Orland 6	Trap 1	0	0	4	4	26	12	40	29	15	11	23	36	36	43	15	24	19	17	17	16	11	8	206	200	
Hwy 99W and Road 18																										
Corning 1	Trap 1	0	0	5	2	40	23	61	30	51	27	56	30	34	39	52	46	74	51	75	49	28	12	476	309	
Northbound I-5 Reststop																										
Corning 2	Trap 1	0	0	13	7	15	16	10	14	9	4	5	7	3	5	1	1	1	1	3	4	3	5	63	64	
Fig Lane and Houghton																										
Corning 3	Trap 1	0	0	1	0	1	1	4	2	2	3	2	0	1	0	1	1	7	2	15	12	3	1	37	22	
Barham and Sampson																										
Corning 4	Trap 1	2	1	29	30	13	15	17	14	13	17	3	5	1	3	0	1	0	1	2	0	0	1	80	88	
Sac. River - Kopta Road																										
Corning 5	Trap 1	0	0	6	5	1	2	2	1	0	0	1	0	0	1	0	1	5	2	2	0	4	2	21	14	
Viola Ave. & Orchard Ave.																										
Corning 6	Trap 1	0	0	2	1	10	7	8	7	7	9	4	3	1	5	6	8	7	9	26	16	8	5	79	70	
Dora Ave. & Marguerite Ave.																										
Total		2	1	137	100	208	157	258	180	147	114	164	149	123	146	107	103	150	115	264	167	94	58	1654	1290	

NOTES: **Traps Placed 3/27/14