

CALIFORNIA **OLIVE** COMMITTEE
2565 Alluvial Ave • Suite 182
Clovis, CA 93611
PHONE 559/456-9096 FAX 559/456-9099

AGENDA

Ripe Olive Executive Subcommittee Meeting Double Tree • Sacramento Room Thursday, November 10, 2016 9:00 a.m.

- I. Call to Order
 - a. Roll call
 - b. Chairperson's comments
 - c. Approval of 7-21-16 Executive Subcommittee minutes (action item)
- II. MAP/TASC Funding
- III. Industry Trade Research
 - a. Review Project
 1. Production Costs – Dan Block
- IV. 2017 Administrative Budget (action item)
- V. Approval of authority to the Executive Director and Chairman for inter-item transfers of the Executive budget. (action item)
- VI. Other Business
- VII. Adjournment

COC Subcommittees for 2015-2017

Executive Subcommittee:

12 Michael Silveira, G-1
Mark Hendrixson, G-2
Dennis Burreson, MUS
Julia Tinsley, BCF
Tim T. Carter, BCF
Ed Curiel, G-1
Janet Edwards, MUS
Felix Musco, MUS
Edward Garcia, G-1
Mark Heuer, G-2
Pat Ricchiuti, G-2
Doug Reifsteck, BFC

Marketing Subcommittee:

14 Bill McFarland, MUSCO
Vacant, BCF
Tim T. Carter, BCF
Ed Curiel, G-1
Wai Wu, MUS
Julia Inestroza, G-2
Pat Ricchiuti, G-2
Scott Hamilton, MUS
Mark Hendrixson, G-2
Vacant, BCF
Edward Garcia, G-1
Michael Silveira, G-1
Rick Benson, G-2
Pablo Nerey, G-1

Inspection Subcommittee:

16
Julia Tinsley, BCF
Paul Danielson, G-2
Julia Inestroza, G-2
Dennis Burreson, MUS
Pablo Nerey, G-1
Rick Benson, G-2
Janet Edwards, MUS
Ben Hall, MUS
Chris Henderson, G-1
Doug Reifsteck, BCF
Cody McCoy, BCF
Larry McCutchen, MUS
Vito Deleonardis, G-2
Phil Quigley, BCF
Art Hutcheson, G-2
Edward Garcia, G-1

Research Subcommittee:

14
Dennis Burreson, MUS
Julia Tinsley, BCF
Art Hutcheson, G-2
Scott Patton, G-1
Bert Ouezada, G-2
Paul Danielson, G-2
Vito Deleonardis, G-2
Chris Henderson, G-1
Cody McCoy, BCF
Ben Hall, MUS
Phil Quigley, BCF
Felix Musco, MUS
Pablo Nerey, G-1
Ed Curiel, G-1



CALIFORNIA OLIVE COMMITTEE
Executive Subcommittee Meeting Minutes
Thursday, July 21, 2016
11:00 a.m.
Double Tree - Modesto, CA

I. CALL TO ORDER

A meeting of the Executive Subcommittee was called to order by Chairman Mike Silveira at 11:55 a.m., and the following members were present:

Members

Julia Tinsley
Mark Hendrixson
Mark Heuer
Michael Silveira
Janet Edwards
Pat V. Ricchiuti
Edward Garcia
Doug Reifsteck
Felix Musco
Ed Curiel

Affiliation:

Bell-Carter
Grower
Grower
Grower
Musco
Grower
Grower
Bell-Carter
Musco
Grower

Others Present:

Alexander Ott	COC
Todd Sanders	COC
Liza Ramon	COC
Peter Sommers	USDA

With a majority of the Subcommittee members present, a quorum was established.

MOVED BY Mark HENDRIXSON, duly seconded by Doug REIFSTECK, and unanimously carried THAT the minutes of the November 5, 2015 Executive Subcommittee meeting be approved. (Motion 7.21.16 #1)

II. OFFICE/PERSONNEL

In February 2016, Kimber Cole from USDA did a Compliance Audit. In that audit there was some recommendations addressed to the Chairman and Executive Director. Both Chairman and Executive Director reviewed and responded to the following recommendations that were given. In June 2016, USDA reviewed the response and was approved. The recommendations and approval letter were provided in the meeting packet.

In the meeting there was also a revised policy on reimbursement, travel, allowances and credit changes. There is a brief description on each area what it acceptable on those four items.

MOVED BY Pat V. RICCHIUTI, duly seconded by Edward GARCIA, and unanimously carried THAT the revised policy on reimbursement, travel, allowances and credit cards be approved. (Motion 7.21.16 #2)

There was a brief discussion on European Olive Inspection. HESTER with the California Olive Grower Council voiced opposition to a Self-European Olive Inspection Program.

MOVED BY Mark HENDRIXSON, duly seconded by Ed CURIEL, and unanimously carried THAT the COC opposes do not support outside entities for self-verification and grading olives. (Motion 7.21.16 #3)

Today, we had three interviews for the Program Supervisor position. The three candidates were Terry Vawter, Fanny Johansson, and Elizabeth Brown. The Executive Committee interviewed the three candidates.

THE COMMITTEE WENT INTO CLOSED SESSION TO DISCUSS PERSONNEL MATTERS.

In closed session action was taken to hire Elizabeth Brown as the COC's Program Supervisor. (Motion 7.21.16 #4)

With no further business to discuss the meeting was adjourned at 2:05 p.m.

I hereby certify that the above is full, true and correct copy of the minutes of the meeting held on July 21, 2016 in Modesto, California, by the Subcommittee.

July 27, 2016
Date July 27, 2016

Liza Ramon
Liza Ramon, California Olive Committee

SUMMARY OF MOTIONS FOR July 21, 2016

Motion 7.21.16 #1

APPROVED

MOVED BY Mark HENDRIXSON, duly seconded by Doug REIFSTECK, and unanimously carried THAT the minutes of the November 5, 2015 Executive Subcommittee meeting be approved.

Motion 7.21.16 #2

APPROVED

MOVED BY Pat V. RICCHIUTI, duly seconded by Edward GARCIA, and unanimously carried THAT the revised policy on reimbursement, travel, allowances and credit cards be approved.

Motion 7.21.16 #3

APPROVED

MOVED BY Mark HENDRIXSON, duly seconded by Ed CURIEL, and unanimously carried THAT the COC opposes do not support outside entities for self-verification and grading olives.

Motion 7.21.16 #4

APPROVED

In closed session action was taken to hire Elizabeth Brown as the COC's Program Supervisor.

******* FOR YOUR INFORMATION *******

FROM: EXECUTIVE SUBCOMMITTEE

SUBJECT: MAP/TASC FUNDING

BACKGROUND: The Foreign Agricultural Service (FAS) helps to maintain and expand foreign markets for U.S. agricultural products by helping to remove trade barriers and enforcing U.S. rights under existing trade agreements. They accomplish this is by distributing funding to cooperators, such as the COC, under programs such as the Market Access Program (MAP) and Technical Assistance for Specialty Crops Program (TASC).

Through the Market Access Program (MAP), FAS partners with U.S. agricultural trade associations, cooperatives, state regional trade groups, and small businesses to share the costs of overseas marketing and promotional activities that help build commercial export markets for U.S. agricultural products and commodities.

The Technical Assistance for Specialty Crops (TASC) program provides funding to U.S. organizations for projects that address sanitary, phytosanitary, and technical barriers that prohibit or threaten the export of U.S. specialty crops.

Each year, FAS announces the MAP and TASC program application period, along with criteria. The application process allows applicants to request funding from multiple USDA market development programs through a simple, strategically coordinated proposal. These proposals are reviewed by FAS, and funds are allocated on a competitive basis.

By obtaining MAP and TASC funding, the COC would then be able to receive the assistance necessary to begin identifying potential export countries and exploring ways to overcome any existing barriers to trade. With an ever increasing presence of foreign product, it is imperative that the California Ripe Olive industry continue to increase its presence in these foreign markets. Conclusively, the assistance of MAP and TASC funds would drastically improve the COC's chances of gaining access to these competitive foreign markets and could potentially increase the presence of California Ripe Olives across the globe.

In 2016, the COC applied for a total of \$350,000 in MAP and TASC funding, and is currently awaiting the news of the dollar amount received.

FAS GLOBAL

Linking U.S. Agriculture to the World

October 10, 2016

Administrator's Message

Last week was an exciting one for FAS as we hosted the USDA-USAID 2016 International Food Assistance & Food Security Conference in Des Moines, Iowa. I cannot give enough kudos to everyone involved in pulling this together and putting on such a high-caliber event. I can't count the number of participants who told me about how much they appreciated the conference. Here's a shout out to those that were particularly involved in making this a success—**Delphine Hamlin, Pace Lubinsky, Christine Mumma, Diane DeBernardo, Liliana Bachelder, Jason Compy, Traci Johnson, Elle Morefield, Matt Casper, Caitlin Corner-Dolloff, Mani Oliva, Eric Baylor, Keith Chanon, Krissy Young, Pauline Simmons**, and the entire **Food Assistance Division**.

Acting Associate Administrator Jason Hafemeister recently received a gracious note from Ambassador Lars G. Lose of Denmark thanking **Sharynne Nenon** and **Benjamin Bocian** for their work in setting up a meeting between Danish Minister Larsen and Under Secretary Scuse and for organizing a roundtable for Danish food and agriculture companies.

Finally, I hope you all saw my email last week about our exciting results from the 2016 Federal Employee Viewpoint Survey (FEVS). In case you missed it, I've included it below...

The 2016 Federal Employee Viewpoint Survey (FEVS) results are in, and I've got great news to share.

Our results are important to me for three reasons.

- ⇒ *First*, participation rates (in FEVS and our parallel survey for Schedule B, LES and FSO trainees) show me that you care.
- ⇒ *Second*, the results will help us develop a roadmap for the future.
- ⇒ **And third, these results affirm that FAS is headed in the right direction.**

Some 265 of you participated in the OPM-administered survey early this year, and 131 participated in the internally-administered FEVS (via Survey Monkey). That level of participation is impressive.

Our results show the highest scores in over 10 years, with "My Satisfaction" and "Leadership" leading the way. In fact, 66 of the 71 core questions increased this year (44 of them by more than 5% percentage points, which is statistically significant).

These results are a tribute to the work many of you have been doing over the last few years. Listening to employees, collaborative leadership, consistent communication, support for training and development, championing change -- these things make a huge difference. In fact, our Employee Engagement Index scores have risen to their highest levels as a result of all those efforts.

The FAS Report provided by OPM and the Survey Monkey results are located [here](#). Click [here](#) to view OPM's 2016 Government-wide Report. Look for additional information over the next couple of weeks - some surprises too!

Thank you for all you have done; let's keep it up.

Congratulations!!

INSIDE THIS ISSUE

[Administrator's Message](#) | [Program Area Updates](#) | [Where in the world is FAS?](#) | [HR Announcements](#) | [Training/Work-Life Info](#)
[Meeting Minutes](#) | [Employee Organizations](#) | [Social Media](#) | [Have a Story or Announcement You'd Like to Share?](#)

Program Area Updates continued...

OTP Meeting with the California Olive Committee (COC): On September 27, 2016, OTP met with Mr. Todd Sanders, Director of Trade and Marketing for the California Olive Committee (COC). The California Olive Committee (COC), which represents California olive growers and two olive canneries, manages the marketing of U.S. olives. The COC is applying to participate in the Market Access Program for the first time for PY 2017. The COC met with OTP to discuss their Unified Export Strategy and plans to expand the Japan market and access to China and India. The main export markets for California ripe olives are Canada, Mexico and Japan. (Joyce West 202-756-7108)

AMR and Climate Change Top Topics for FAO Committee on Agriculture: The FAO Committee on Agriculture (COAG) met September 26-30 to discuss climate change, antimicrobial resistance (AMR), and Codex expert committee funding among other issues. The COAG encouraged FAO to continue and increase its work on AMR noting that it is a serious challenge facing agriculture and human health. The COAG similarly encouraged FAO's work on climate change and encouraged FAO to consider how to bridge the gap in funding for the Codex expert committees. (Elle O'Flaherty, 720-9524)

Chile Hosts Regional Meat Inspection and Certification Training: On September 26, 2016, the Foreign Agricultural Service, the Food Safety and Inspection Service, and the Chilean Ministry of Agriculture offered a 5-day regional seminar in Santiago, Chile on the inspection and certification of meat and meat products exported to the United States. The training, which included inspectors and veterinary officials from the United States, Chile, Uruguay, and Paraguay, helped increase awareness of U.S. science-based practices and future adoption of like-minded policies. (Osvaldo Gomez-Martinez, 720-0161)

FAS Hosts Senior Biotechnology Advisor from India: On September 22-23, 2016, FAS welcomed Dr. S.R. Rao from the Indian Biotechnology Office and his industry colleague. They met with representatives of FDA, APHIS, ARS, and U.S. animal breeding industry representatives. The trip was a follow up to FAS supported animal biotech activities with India. Dr. Rao discussed India's need for biotech regulatory capacity building and Indian GE mustard developments. A visit by a National Institute of Biotechnology team is expected in early FY17 and future animal biotech collaborative efforts are planned. (Phil Hayes, 720-7458)

Market Development Grant Final FY2016 Awards Update: On September 19, 2016, Administrator Karsting signed the Emerging Markets Program (EMP) Tranche VIII Decision Memo, funding nine projects, bringing the final EMP FY 16 total to 47 projects at \$7,007,580. On September 27, 2016, Administrator Karsting signed the Technical Assistance for Specialty Crops (TASC) Tranche VII Decision Memo, funding three projects, bringing the final TASC FY 16 total to 25 projects at \$6,229,664. On September 7, 2016, Administrator Karsting signed the Quality Samples Program (QSP) Tranche IV Decision Memo, funding one project, bringing the final QSP total to 14 projects at \$1,381,344. (Lona Powell, 202-720-8557)

Beef Program in Paraguay: From September 15 to October 5 a USDA/FAS environmental analyst assigned to the United States Agency for International Development (USAID) Washington will travel to Asuncion, Paraguay for a monitoring visit of the International Finance Corporation's proposed loan to the Minerva Beef Project. The purpose of the trip is to conduct an investigation, looking at issues related to Indigenous Peoples. Under Title XIII - the International Financial Institutions Act of 1977, USAID is to review multilateral development bank project proposals for environmental and social impacts and to determine whether the proposals will contribute to sustainable development. This work supports the FAS strategic objective to enhance partner countries' capacity for agricultural development and participation in international trade. (Tom Meyer, 202-708-1697)

China Announces New Maximum Residue Limits: This week the United States sent comments to China on its WTO notification on it proposed 1,058 maximum residue limits (MRLs) for 160 pesticides. The U.S. industry and FAS noted that 938 of the proposed MRLs conformed to Codex MRLs. However, 120 of the proposed MRLs differed from Codex MRLs. (Donald Willar, 205-0980, Jasmine Junk, 644-4681)

INSIDE THIS ISSUE

[Administrator's Message](#) | [Program Area Updates](#) | [Where in the world is FAS?](#) | [HR Announcements](#) | [Training/Work-Life Info](#)

[Meeting Minutes](#) | [Employee Organizations](#) | [Social Media](#) | [Have a Story or Announcement You'd Like to Share?](#)

WHERE GOOD TASTE MEETS GOOD HEALTH

EatingWell®

NOVEMBER/DECEMBER 2016

BRILLIANT HOLIDAYS

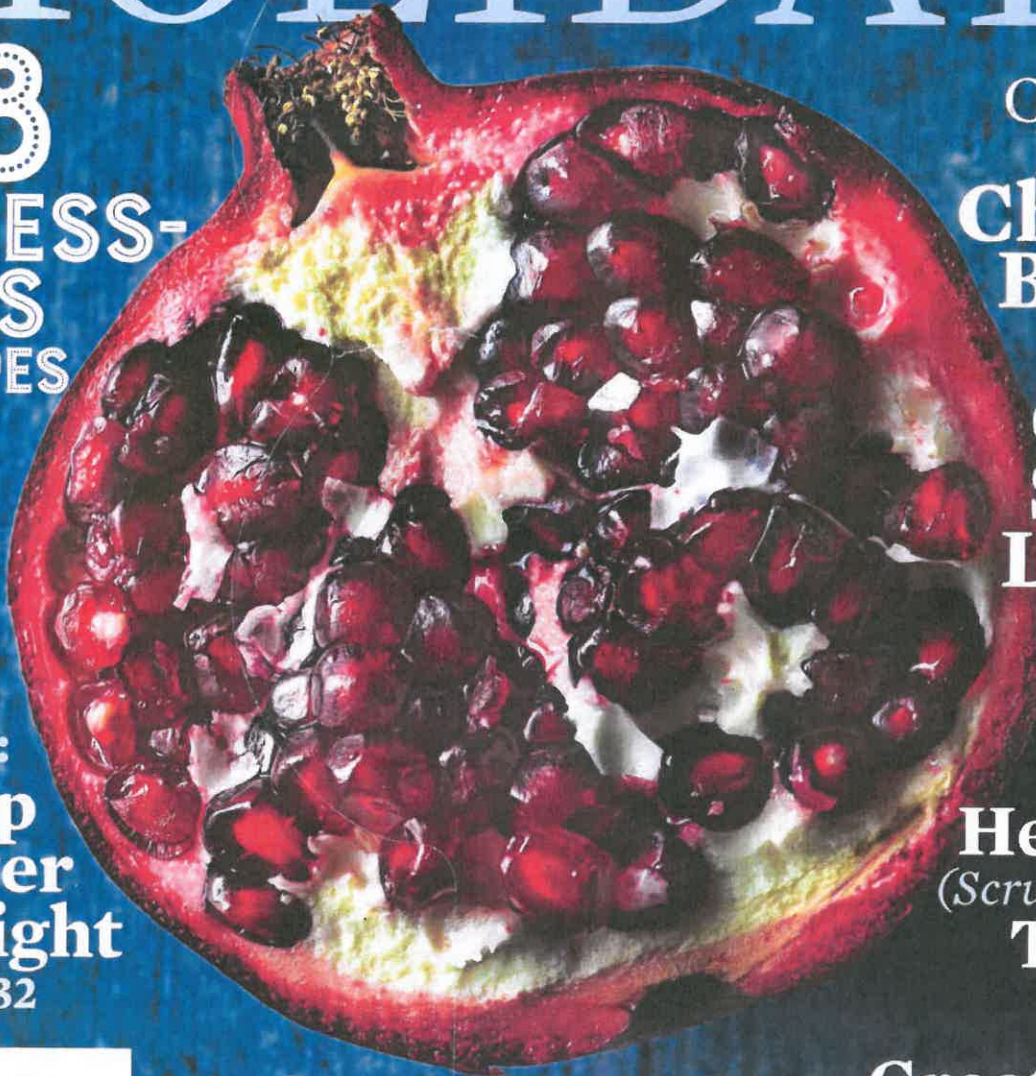
48
STRESS-
LESS
RECIPES

Create a
Perfect
**Cheese
Board**

**Cook
Sides
Like a
Chef**

**Bake
Healthy
(Scrumptious)
Treats**

**Great Gifts
for Food
Lovers**



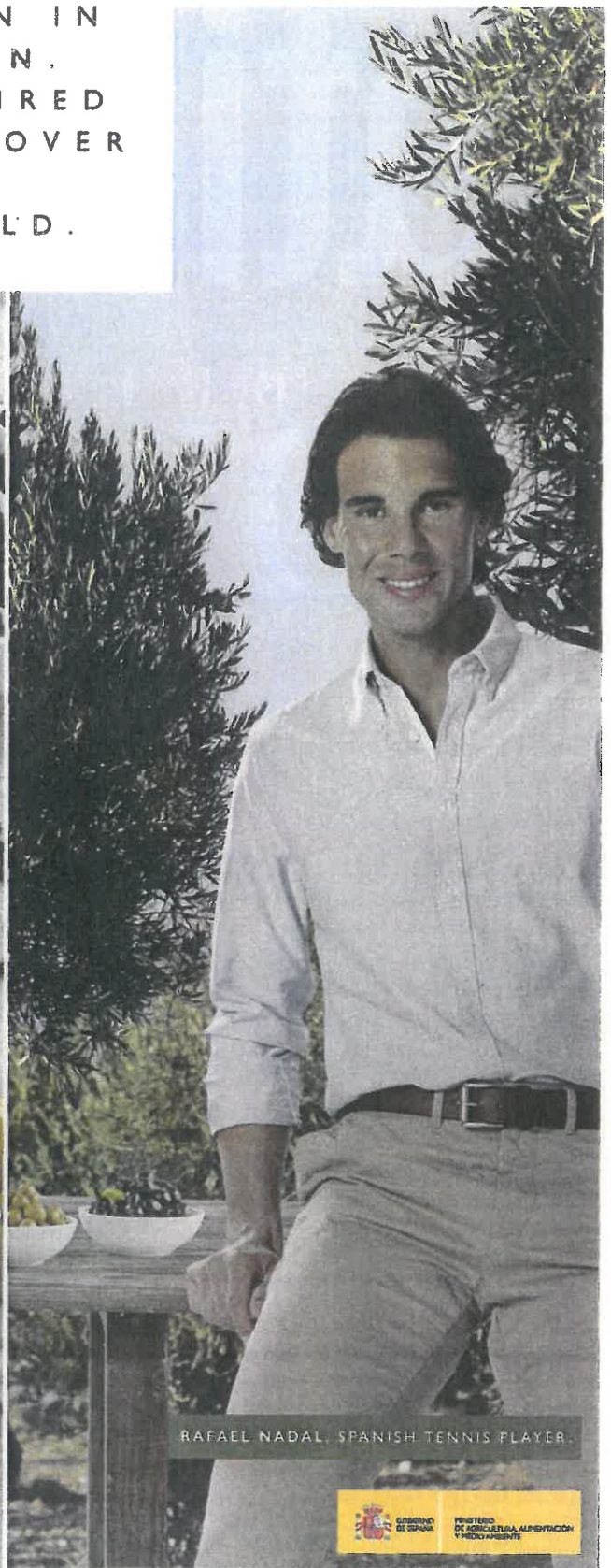
**EAT
THIS:
Sleep
Better
Tonight**
PAGE 32

U.S. \$4.99



DISPLAY UNTIL DEC 20, 2016

BORN IN
SPAIN.
ADMIRED
ALL OVER
THE
WORLD.



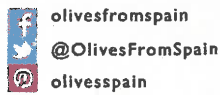
RAFAEL NADAL, SPANISH TENNIS PLAYER.



CLOCKWISE FROM TOP LEFT: JEFF KALONIK; HILL WADSWAN; HELEN NORWALK; CO. KARLA COVARRUBIAS



OLIVESFROMSPAIN.US



© 2015 Olives from Spain



BRING SABOR TO THE HOLIDAYS WITH OLIVES FROM SPAIN

With a wide variety of sizes, shapes, flavors, and colors, Olives from Spain are a festive addition to any holiday meal. Only 37 calories per 7 olives, they'll satisfy your palette while giving you a head start on your New Year's health goals. So whether it's in a recipe or as an appetizer, serve up some *Gordals*, *Manzanillas* and *Hojiblancas* and bring sabor to the holidays.



'TIS THE SEASONING

Combine Spanish Olives with garlic, oregano, bay leaves, red pepper, vinegar, lemon, and olive oil for into a unique appetizer that's perfect for your holiday party.

Visit OlivesfromSpain.us for recipes, tips and more sabor.



CONTENTS

106



93



70



84



118

70 Thanksgiving, One Box at a Time
Iowa farmer Danelle Myer offers the ultimate meal-delivery service: Thanksgiving in a box. Take a taste of this heartland feast. BY SUMMER MILLER

84 All About the Sides
Sharing great side dishes and giving back to the community are top of the list during the holidays. Six of our favorite chefs give us a taste of both. RECIPES BY MICHAEL SYMON, MARCIUS SAMUELSSON, MING TSAI, NAOMI POMEROY, STEVEN SAT TERFIELD, JENNIFER JASINSKI

93 Cheese Nation
America is in the midst of an artisanal cheese revolution and new science gives us license to love it. Cheese fanatics, *this* is our moment! BY LAURA WERLIN

106 Go Orange
Want loads of powerful nutrients? Reach for fiery-hued produce, from winter squash and carrots to papaya and sweet potatoes. BY KAREN ANSEL, M.S., R.D.N., & ANNE TREADWELL
RECIPES BY RAGHAVAN IYER

118 Perfectly Sweet
Boston-based chef Joanne Chang owns Flour Bakery, beat Bobby Flay in a sticky bun throwdown and stays fit enough to have run the Boston Marathon 16 years in a row. It's no surprise that creating these holiday favorites made with a little less sugar was a piece of cake for her. BY JOANNE CHANG

******* FOR YOUR INFORMATION *******

FROM: EXECUTIVE SUBCOMMITTEE

SUBJECT: INDUSTRY TRADE RESEARCH

BACKGROUND: The COC is currently conducting a review project to calculate the average costs of production for California Ripe Olives. This project has been facilitated by the COC and consultant, Dan Block, of D.W. Block Associates, LLC. A summary of this study is currently underway and will be presented at the next Executive Subcommittee meeting in December.

******* ACTION REQUIRED *******

FROM: EXECUTIVE SUBCOMMITTEE

SUBJECT: 2017 BUDGET

RECOMMENDATION: THAT the Committee adopt the General Administration 2017 FY Budget and the following actions outlined 1 – 3.

BACKGROUND: The following is the General Administration Budget for the California Olive Committee. This year, the Committee added a separate category for exports. As noted below, General Admin. decreased by \$7,700 whereas exports increased by \$36,000.

Staff has put together a history of previous Executive Committee Budgets.

<i>FISCAL YEAR</i>	<i>2017 (Proposed)</i>	<i>2016</i>	<i>2015</i>	<i>2014</i>	<i>2013</i>	<i>2012</i>	<i>2011</i>	<i>2010</i>	<i>2009</i>
ADMIN	\$392,100 ¹	\$399,800	\$393,500 ²	\$333,800	\$333,500	\$415,900 ³	\$324,923	\$359,549	\$288,552
%Change	-1.9%	1.6%	17.9%	.09%	-19.8%	28.0%*	-9.6%	24.6%	-
EXPORTS	\$121,000	\$85,000	\$72,000	\$0	\$0	\$0	\$0	\$0	\$0
%Change	42.3%	18.1%	100%	-	-	-	-	-	-

The Sub-Committee must decide:

- 1) Approval of the 2017 Fiscal Budget
- 2) Recommend to the Committee to delegate authority from the Committee to the Executive Director with oversight by the Chairman, for Inner-Item transfer fund Authority
- 3) Recommend to the Committee to approve the use of legal counsel should one be needed with approval from the USDA.

FISCAL IMPACT: \$513,100 for FY 2017

¹ \$121,000 of the total budget is dedicated to the export category, and the remaining \$392,100 is for general administrative costs. General admin. decreased from \$399,800 in 2016 FY to \$392,100 this year, whereas exports increased from \$85,000 to \$121,000.

² The Committee approved dollars for crisis communication and legal activities coupled with \$72,000 for industry studies. These studies were for additional research on specific items. Legal and crisis communication will be rolled over to next year for a reserve to be created going forward.

³ The original approved Executive Sub-Committee budget for 2012 was \$335,900. However, in order to begin electronic reporting, USDA required the Committee to approve \$80,000 not used in research for the 2012 FY and reallocate to the Executive Sub-Committee, otherwise the project would have to be placed on hold. The mid-year correction increased the Executive Sub-Committee budget by \$80,000 to total \$415,900.

GENERAL ADMINISTRATION BUDGET

	Budget 2015	Budget 2016	Budget 2017	Difference
Salaries	\$ 114,500	\$ 118,000	\$ 110,000	\$ (8,000)
Attorney/crisis communication	\$ 5,000	\$ 25,000	\$ 25,000	\$ -
Audit Fee	\$ 7,500	\$ 8,500	\$ 8,500	\$ -
Bookkeeper	\$ 5,000	\$ 5,000	\$ 8,000	\$ 3,000
Accounting Service	\$ 1,800	\$ 1,800	\$ 1,900	\$ 100
Vacation & Sick Leave Expense	\$ 5,000	\$ 5,000	\$ 5,000	\$ -
FICA & Medicare Expense	\$ 10,000	\$ 10,000	\$ 10,000	\$ -
Health Insurance	\$ 25,000	\$ 28,000	\$ 25,000	\$ (3,000)
Disability Insurance	\$ 3,000	\$ 3,000	\$ 2,500	\$ (500)
Pension Plan Contribution	\$ 4,000	\$ 4,500	\$ 4,000	\$ (500)
Storage	\$ 1,100	\$ 1,100	\$ 1,300	\$ 200
Telephone	\$ 5,500	\$ 5,500	\$ 5,500	\$ -
Travel Committee	\$ 20,000	\$ 20,000	\$ 20,000	\$ -
Travel Office	\$ 15,000	\$ 15,000	\$ 15,000	\$ -
Travel Insurance	\$ 1,800	\$ 1,800	\$ 1,800	\$ -
General Insurance	\$ 6,900	\$ 6,900	\$ 6,900	\$ -
Insurance-members/management	\$ 9,500	\$ 10,000	\$ 11,000	\$ 1,000
Postage	\$ 9,200	\$ 7,000	\$ 7,000	\$ -
Office supplies	\$ 4,700	\$ 4,700	\$ 4,700	\$ -
Maintenance	\$ 1,000	\$ 1,000	\$ 1,000	\$ -
Printing - Admin	\$ 11,500	\$ 11,500	\$ 11,500	\$ -
Equipment, Software, Furniture	\$ 4,000	\$ 4,000	\$ 4,000	\$ -
Crop Estimate	\$ 6,500	\$ 6,500	\$ 6,500	\$ -
Misc. Admin Expense	\$ 2,000	\$ 2,000	\$ 2,000	\$ -
Education Training	\$ 4,000	\$ 4,000	\$ 4,000	\$ -
Crisis Communication	\$ 20,000	\$ -	\$ -	\$ -
California Apple Commission	\$ 90,000	\$ 90,000	\$ 90,000	\$ -
Exports/Industry Studies	\$ 72,000	\$ 85,000	\$ 121,000	\$ 36,000
TOTAL	\$ 465,500	\$ 484,800	\$ 513,100	\$ 28,300

TOTAL FOR G&A = \$392,100
 Total for Exports = \$121,000

EXPORTS:

Asia Logestica	\$ 10,000	\$ 10,000	\$ 10,000	\$ 10,000
Industry Relations	\$ 15,000	\$ 15,000	\$ 15,000	\$ 15,000
BCI	\$ 45,000	\$ 45,000	\$ 45,000	\$ 45,000
Misc.	\$ 5,000	\$ 5,000	\$ 5,000	\$ 5,000
FAS/USADEC	\$ 3,000	\$ 3,000	\$ 3,000	\$ 3,000
Japan	\$ 10,000	\$ 10,000	\$ 10,000	\$ 10,000
India	\$ 12,000	\$ 12,000	\$ 12,000	\$ 12,000
China	\$ 15,000	\$ 15,000	\$ 15,000	\$ 15,000
Canada	\$ 3,000	\$ 3,000	\$ 3,000	\$ 3,000
Mexico	\$ 3,000	\$ 3,000	\$ 3,000	\$ 3,000
TOTAL	\$ 121,000	\$ 121,000	\$ 121,000	\$ 121,000

**TOTAL FOR
 MAP &
 TASC DOLLARS
 FOR MATCH**

******* ACTION REQUIRED *******

FROM: EXECUTIVE SUBCOMMITTEE

SUBJECT: INTER-ITEM TRANSFERS OF THE EXECUTIVE BUDGET

RECOMMENDATION: THAT the Committee grant authority to the Executive Director and Chairman for inter-item transfers of the Executive Budget.